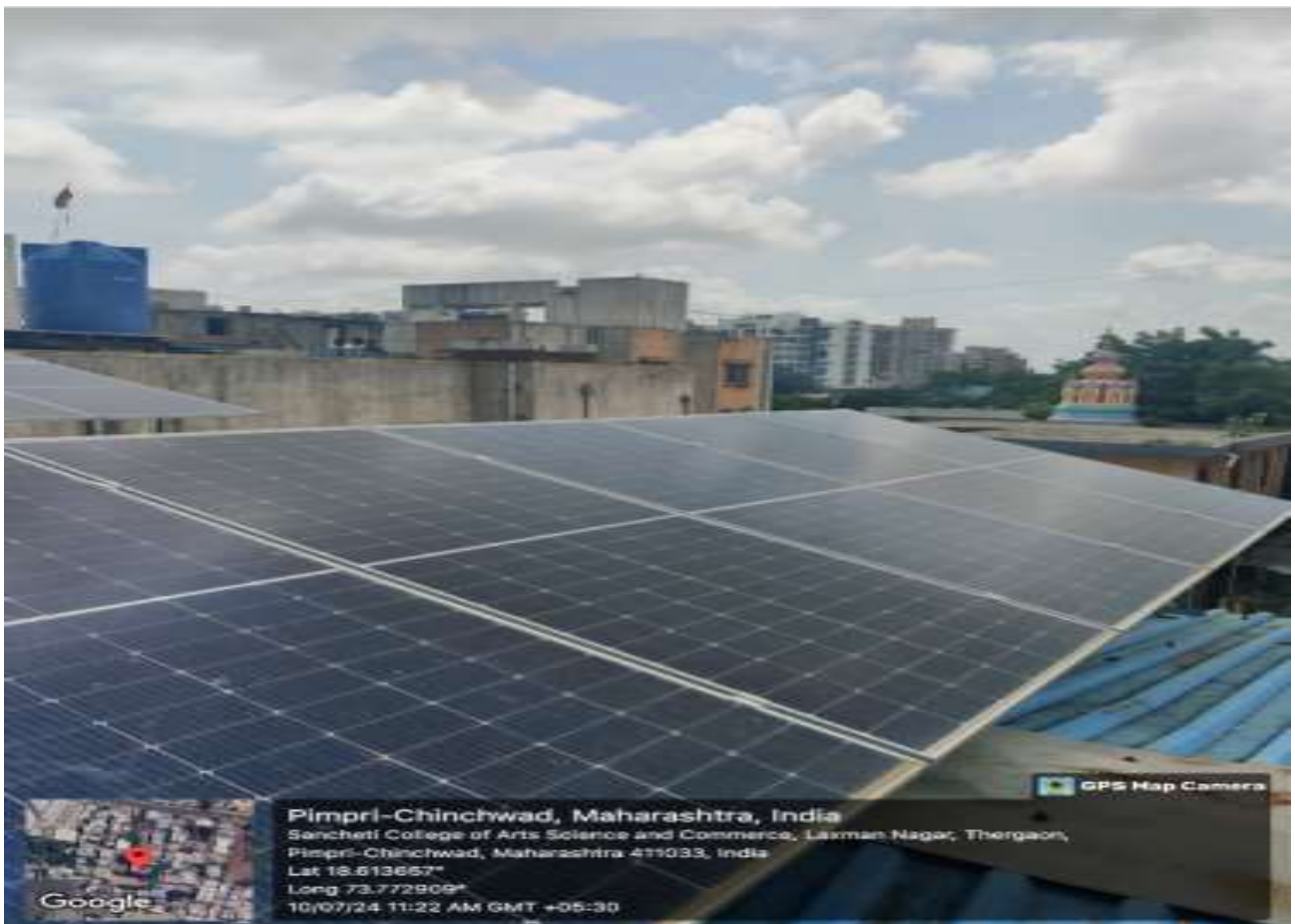
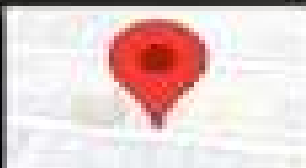


SOLAR



LED LIGHTS



22/5/25, Krantiveer Nagar
Thergaon, Thergaon,
Pimpri Chinchwad,

overcast
clouds

LIGHTED CLASSROOMS



WASTE MANAGEMENT



TREE PLANTATION



CAMPUS GREENERY



GPS Map Camera

Google

Pimpri-Chinchwad, Maharashtra, India
Sancheti College of Arts Science and Commerce, Laxman Nagar, Thergaon,
Pimpri-Chinchwad, Maharashtra 411033, India
Lat 18.613667°
Long 73.772869°
10/07/24 11:06 AM GMT +08:30

SOLAR BILL





SAVPM

Sancheti College of Arts, Commerce & Science
Affiliated To Savitribai Phule Pune University



ENERGY CONSERVATION Policy Document

Energy conservation policy framed at institutional level.

1. It requires to lay down the certain standards to reduce energy usage and expenditure through adoption of best practices within the campus.
2. The aim is not to create unnecessary obstructions in regular activities within the campus but to use energy economically.
3. All the stake holders like student community, teaching and nonteaching faculty and other visitors are subject to terms and conditions framed in the policy. In other words, it will be applicable to all concerned.
4. All stake holders shall be liable to reduce the amount of energy consumption by using natural lighting, turning off unnecessary use of lighting.
5. Electricity and related equipment/appliances shall be used only in working hours.
6. All concerned will ensure before leaving the campus that lights are off. However, necessary lights will be on during night as safety measures.
7. Energy efficient bulbs and tubes (LED) only shall be used within campus.
8. Most of the energy is consumed through air conditioners and heaters. Therefore, it must be ensured that they are used only when essential keeping in mind summer and winter season.
9. Energy consumption is directly related to water consumption. Therefore, it has to be ensured that no drop of water goes waste. Hence water management is equally essential
10. Energy saving practices should be followed in all areas of institution weather classrooms, laboratories, office, library and playgrounds.
11. Faculty should sensitize students against the misuse of energy and growing energy cost just to save energy for future. Energy saved is energy generated.
12. Faculty should teach students to believe in and practise "Save Energy, Save Water and Save life" in their day-to-day life.
13. Turn off all equipment when not in use.
14. Defrost and clean refrigerators.



15. Recycle old freezers and by energy stratum appliances.
16. Use multi-level light switches.
17. Avoid use of window air conditions. They damage buildings and require high maintenance.
18. Don't open doors and windows frequently as it affects heating/ cooling effects.
19. Equipment charger's electronics, and unessential devices should be unplugged when not in use.
20. Don't leave water tap open. Use the slow flow device.
21. Maintain required temperature of rooms and labs to protect equipment and appliances.
22. This is the issue regarding building construction with a proper ventilation system in each room as air is replaced by outside air.
23. The college management has requested the Department of Higher Education, State Government of Madhya Pradesh to install solar panel so as to reduce power expenses and save energy for future.
24. Problems regarding energy conservation should be addressed to the planning committee under the head of the institution.
25. Increased use of day light should be encouraged to decrease energy cost.
26. Proper maintenance is required to ensure the system operate efficiently. It will help reducing and minimizing expenditure.
27. No energy conservation programme can be successful if progress is not monitored on a regular basis. Meter reading is an efficient tool to monitor the consumption. The college has its own building metered.
28. The institution shall comply with legal and other requirements. It will also identify and implement energy efficiently measures.
29. The institute prefers to purchase energy efficient products.
30. Energy conservation policy shall be regularly updated and reviewed from time to time.




PRINCIPAL
Sancheti College of Arts,
Commerce & Science
Anand Baug, Thergaon, Pune-33



SAVPM

Sancheti College of Arts, Commerce & Science
Affiliated To Savitribai Phule Pune University.

परमं नागं ततो द्या



संचेती

Policy Document on

Green Campus and Plastic Free Campus

Taking into account the necessity of protecting environment for a sustainable, pollution-free and healthy life on the planet Earth in the coming years. The college endeavours to follow this policy strictly by actually enacting to and also creating environmental consciousness among the students and thereby among the society in general by organizing various activities within and outside the campus.

The college works towards creating a green, pollution-free and healthy environment with a missionary zeal and dedication. The students are given strict instructions to maintain the campus clean and green and it is reflected in the college.

Green Campus Policy

The Green Campus Policy of the college visualizes a Clean and Green Campus where environmental friendly practices and education combine to promote sustainable and eco-friendly practices in the campus and beyond the campus. It also offers the institution an opportunity to take the lead in redefining its environmental culture through inculcating environmental ethics among the students and staff.

Objectives

- To create awareness in students and staff to minimize the use of environment-friendly products and services.
- To inculcate the importance of cleanliness for a healthy life among student and staff
- To aware students about environmental issues by organizing Events like Awareness Campaigns, Cleanliness Drives, Workshops, Presentations, Tree Plantation Drives, Competition on "SAY NO TO PLASTIC" etc.

The tree-plantation drives are undertaken by the NSS and NCC Units of the college on regular basis generally in the month of January every year.

The Institution is committed to managing its campus in accordance with its Clean and Green Campus Policy by establishing the following infrastructure and carrying out the following activities:

- Landscaping with Trees and Plants
- Solar Plant in the College



- Solid Waste Management
- Installation of Incinerator in the Girls' Wash-Room
- Celebrate the days to protect and Nurture Environment
- The Green, Environmental and Energy Audit

The Institute believes that everyone has to work out the time bound strategies to implement green campus initiatives. These strategies need to be incorporated into the institutional planning and budgeting processes with the aim of developing a clean and green campus.



PRINCIPAL

Sancheti College of Arts,
Commerce & Science
Anand Baug, Thergaon, Pune-33